

Topics for GLID planning discussion / work meeting>>>>

2026 MAY 16th GLID Board planning meeting: 9am-10:30am

WHERE: Wyanett Town Hall **PLEASE ALLOW FOR SOME AGENDA ORDER CHANGES**

Attendees are GLID Board, with Guests from SWCD, Lake Restoration, Moleaer Nanobubble technology, and Public invited too

MTG STARTERS: Pledge Allegiance. Call Meeting to Order. Note Attendees.

1- Objective: Prep for June 27th 2026 GLID Annual Lake Owners Meeting.

- Date for next Annual Meeting – Keep the same 4th Saturday in June (June 26, 2027)

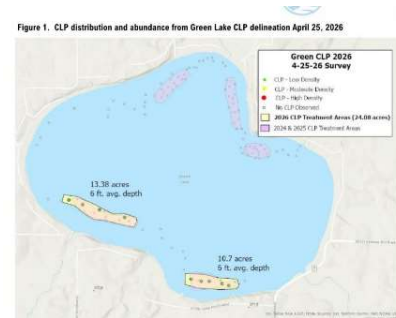
2- Review current GLID Communications Status, Effectiveness. Changes?

GLID using Facebook, Website, emails, Wyanett Township Newsletter, and GLID's New Lake Owner Welcome Package from Ginny and Amy touching 7 homes in 2025

Names of owners?

3- GREEN Lake AIS and weed Management activities

- DNR permits renewed ✓ >> NO DNR AIS GRANT AGAIN
 - NEED new Lake survey by AIS Services est \$750- DONE
 - Lake Restoration treating 24 acres with Diquat @ 1.5gal/acre]
- @ \$145/acre ICCOLA rate + mobilization fee= \$4741.60
- GLID to pay for Lake Owners dock treatment DNR permits \$40 fees GLID working with Codey Barby, Mgr and Paul Kretsch,VP
 - Lake Restoration changing dock treatment herbicide formula for Green Lake to be more effective Encourage dead weed removal >Wyanett Compost pile available



4-- AIS Boat Inspections – GLID requested Inspectors at Green Lake access starting in May > Tues, Wed, TH. Fri, Sat, Sunday ---ending after Labor Day o Requested 44 hrs X 20 weeks from Isanti Zoning.. Total Hours= 748 = \$21.617 Value.

Inspections raise awareness! Hopefully Prevent new Zebra Mussel invasion.. along with Starry Wart! Per DNR data, only tiny amount of 'Weed Violations' of .6% GLID also invited Matt Kohout Isanti Sheriff Rescue Team to patrol lake and access.

5- Just how is Green Lake doing? -Phosphorus and Clarity Trend-

Bad News **All Green Lake parameters monitored in 2025 rated a "C/D" with BELOW STANDARDS set for deep lakes!** Due in part of Mother Nature's monsoon rain increasing nutrient flow into lake with high temperatures for perfect storm, creating massive algae bloom with BLUE-GREEN toxic outbreak

Metropolitan Council lake grading system, , **our Green Lake scored "C/D" in 2025...**

compared to 2024-"C", 2023-"B", 2022-"C", 2018-"B", 2017-"D" grades.

Need to continue to look for ways to improved Green Lake Water Quality

MN Clean Water Goals for Deep Lakes vs Our 2025 Measurements :

Total Phosphorus (TP):≤40ug/L vs Our Green Lake: **69.9 ug/L (TP)** – 53 in2024!

Chlorophyll-a:≤14mg/L vs Our Green Lake: **20mg/L (Chl-a)** - 18.5 in 2024

Secchi Depth:≥4.59feet vs Our Green Lake: **3.99ft. (Secchi)** –5.55ft in 2024

Complete report on GLID website; 2025 Green Lake Water Quality Monitoring

NOTE: GRATEFUL for Green Lake water monitoring and sampling done by our volunteers: Alex &Marissa, David/Lisa and Mortenson Family

5B- GLID/SWCD to Explore Lake Improvement Plan Ideas; Nanobubble technology with Jonathan from Moleaer Moleaer uses nanobubble technology—extremely small gas bubbles 100 nanometers in diameter . (primarily oxygen)—to improve water quality in lakes,
How It Helps Impaired Lakes.. Reduces Internal Phosphorus Loading...Oxygenated sediments keep phosphorus bound in the soil. Suppresses Harmful Algal Blooms (HABs). Improves Water Clarity with Reduced algae = lower turbidity

6- Green Lake / SWCD MPCA Section 319 Grant Status and MOU Requirements.
>> **SWCD update**

MPCA's \$289,645 of 319 Phase 2 grant funding for Green Lake projects for 2025-2028- submitted by SWCD Tiffany - Grant Addresses water quality, mercury content, AIS, TP Loading, Watershed areas.

- Stated a potential of getting Green Lake off MN Impaired Lake list in 10 years.
- o Plans to reduce TP loading every year with new mitigation strategies and actions

Review of GLID/SWCD MOU REQUIREMENTS:

- GLID funding needed for stream monitoring:

Net costs for 4 years River/Stream Monitoring done by SWCD for Grant is less than \$8,000
SWCD charged GLID \$1,314.66 in 2025

- Provide up to \$63,476 match contribution to the Project as described in the Grant Match Work Plan. A portion of this will be composed of in-kind time.(was \$59,342) Should be no problem as match-contribution amounts are in GLID four year budgets
- \$333/year for "volunteer in-kind" matching funds. GLID needs to submit amounts if needed

7- Lake Shoreline Restoration Projects and Costs --- Sue and Dell

Use budgeted \$5K to encourage activities with 25% up to a max of \$2000 reimbursement of preapproved paid bill. . SWCD Projects are currently underway.

List of all Shoreline restoration projects are on GLID website

GLID is leveraging SWCD 75% offer for new Rain Gardens. Todd to respond to requests

8- Review 2026 Budget Status – Barbara Prince

GLID factored in increases in costs along with loss of grants

GLID cost reducing activities without cutting activities is reflected ✓

- there are 200+ lake properties on Green Lake. paying the tax levy

9- Prepare 2027 GLID BUDGET and New Proposed Tax Levy.—Barbara Prince

GLID continues to factor in increases in costs along with loss of grants

10- GLID Board in place- Any changes?

Need 7-9 to be on GLID Board= Requirement Satisfied

Could use more volunteers? What tasks?

ICCOLA Representative to attend once a month meetings with 7 other lakes

"Green Lake is a jewel in nature's crown. Like all valuables, our lake needs to be protected.

Who could care more for our lakes than the people who love them and live on them?